



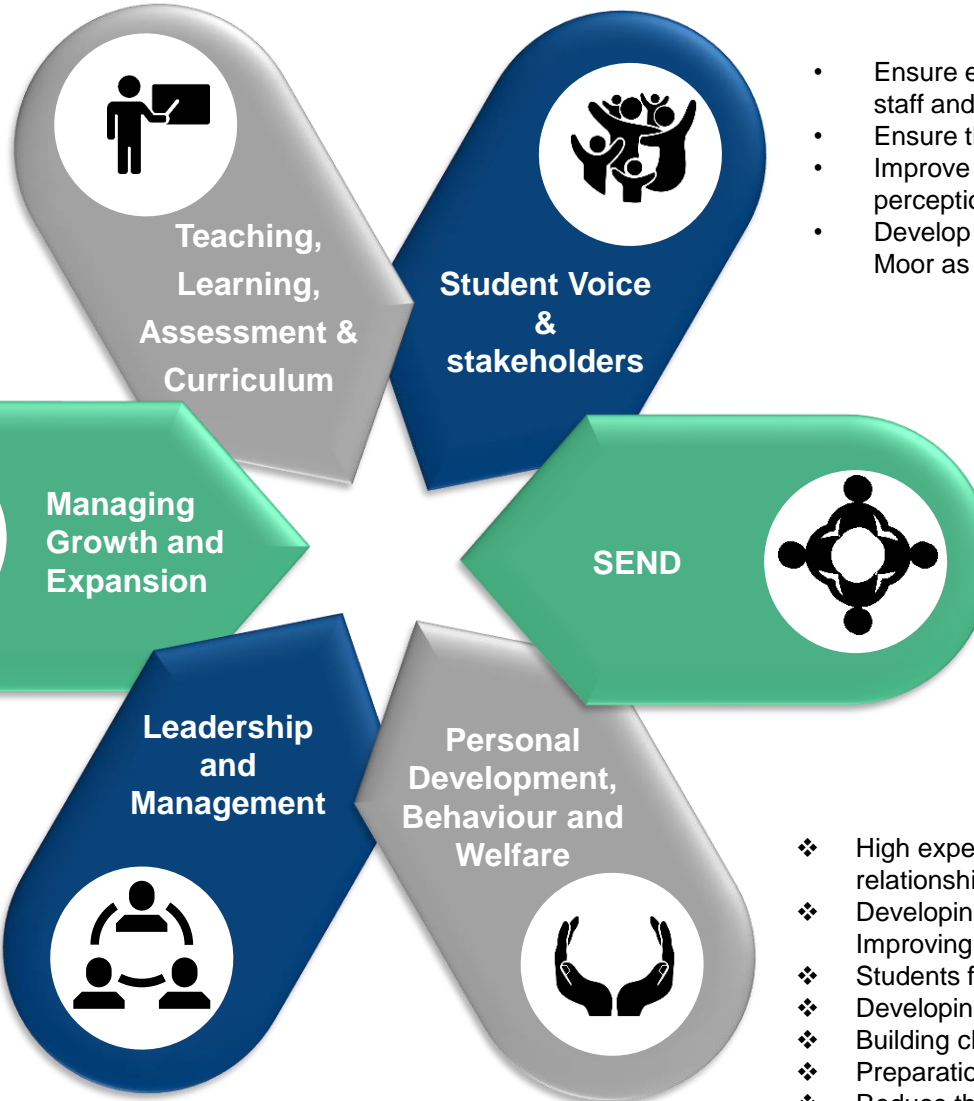
Forest Moor School Improvement Plan Priorities 2022-23



- ❖ An ambitious curriculum for all
- ❖ Teachers understand what they teach and why using appropriate methods
- ❖ Environments support learning
- ❖ Research based approach to teaching reading
- ❖ Consistent approach to numeracy
- ❖ Improved vocational offer

- ❖ Continue to invest in and develop the site and ICT infrastructure
- ❖ Foster a close working relationship with commissioners
- ❖ Focus on recruitment and retention of high quality staff
- ❖ Review all legacy contracts to ensure best value

- ❖ All leaders have a clear and ambitious vision
- ❖ Improving professional knowledge of all staff
- ❖ A realistic and collaborative approach to managing workload
- ❖ Development of Governance
- ❖ Clear and consistent quality assurance systems



- Ensure effective engagement with parents/carers, staff and local stakeholders
- Ensure that student voice is systematically heard
- Improve parent/carers and local stakeholder perception of Forest Moor School
- Develop a clear strategy for promoting Forest Moor as a positive force in the community

- ❖ Secure a robust and efficient EHCP review process
- ❖ Review all student banding
- ❖ Ensure a clear admission and transition process
- ❖ Develop and articulate a clear "Forest Moor offer"
- ❖ Improve staff understanding of student needs through CPD
- ❖ Identify clear post 16 pathways for leavers

- ❖ High expectations of behaviour based on positive relationships
- ❖ Developing positive attitudes to learning
- ❖ Improving attendance
- ❖ Students feel safe
- ❖ Developing students interests and talents
- ❖ Building character, confidence and resilience
- ❖ Preparation for modern life
- ❖ Reduce the number of children not accessing full time education